

**Wilson County  
Program for the Deaf and Hard of Hearing**

**Teachers:**

Jami Walker  
Courtney Harrison

**Contact information:**

Jami Walker: [walkerj@wcschools.com](mailto:walkerj@wcschools.com)  
Courtney Harrison: [harrisonc@wcschools.com](mailto:harrisonc@wcschools.com)

Stoner Creek Elementary  
1035 Mt Juliet Rd  
Mt Juliet TN, 37211

Principal: Phyllis Robinson  
Assistant Principal: Kathy Stivender

615 754-6300 (V/TDD)  
615 754-5784 (fax)  
TDD/TTY on site

## Contents

Location .....	3
Qualification.....	3
Services Available.....	3
Program Description .....	4
Preschool Services .....	4
Hours of Service.....	4
Parent Training.....	5
Teacher Training .....	5
Method .....	5
Classroom Communication .....	5
Homework.....	6
Tips for Helping Your Child Succeed.....	6
Items From Home .....	7
Local Resources .....	13-14
Basic Sign Language	
Letters.....	8
Numbers.....	8
The Basics .....	9-12

### **Location:**

Deaf/hard of hearing students whose education is impacted on a daily basis generally attend Stoner Creek Elementary. Stoner Creek Elementary houses the deaf education (DE) teachers and interpreters as well as a speech therapist and regular education teachers who have had in-service training in the education of deaf/hard of hearing students. Students' homeroom classes receive sign language training to allow the deaf students to communicate directly with their peers. Additionally, having these students at one school allows them to socialize with other students who are also deaf or hard of hearing. But remember, by law the IEP team will make the final decision about the location of services.

### **Qualification for Services:**

To qualify to be certified as deaf or hard of hearing a student must have one or more of the following:

- inability to communicate effectively due to a hearing loss
- inability to perform at expected level due to a hearing loss
- delayed speech and/or language due to a hearing loss

Again, the IEP team is responsible for determining if the student meets this criterion.

### **Services Available:**

Students that are served through the DE program can participate in any of these available services, depending on the individual child's need and IEP team decision:

- Deaf Education
- Preschool Services
- Speech-Language Pathology
- Resource
- Comprehensive Developmental Classroom
- Occupational Therapy
- Physical Therapy
- School Counseling
- Inclusion with same-age peers (part or full-day)
- Collaborative Teaching
- Pull-out Teaching
- Consultation Services
- Sign language interpreters

**Program Description:**

The Wilson County Program for the Deaf and Hard of Hearing is a comprehensive program that offers a variety of options for students. It is viewed as an “umbrella” program because the students are under our supervision during the whole school day. Supporting the students through an “umbrella” program allows us to consult and collaborate with their regular education teachers more frequently, monitor the listening environment and be flexible to meet the needs of the students. This does NOT mean they are in the deaf education classroom all day. It DOES mean that we can support them in all areas throughout their school day.

As required by federal law, we place our students in the general education classroom as much as possible. The school-aged students attend regular education classrooms for **at least** support classes, lunch and recess. Most of our students also attend Social Studies, Science and Math in their regular education classrooms. Reading and Language are typically taught by the deaf educators.

Students who do not require daily services remain at their home school. They are usually seen on a weekly or monthly basis.

**Preschool Services:**

Preschoolers who qualify for DE services are typically seen at Stoner Creek elementary. However, the IEP team will decide the exact frequency and location of the services.

**Hours of Service:**

Each students’ needs change from year to year. In turn, the direct hours a student receives from the Deaf and Hard of Hearing Program may also change from year to year. For example, a child in 1<sup>st</sup> grade may need 1 ½ hours, then when he goes to 2<sup>nd</sup> grade he needs 2 ½ hours, but in 3<sup>rd</sup> grade he only needs an hour. These changes are typical and expected. Again, the IEP team will decide the number of hours a student needs per day.

**Parent Training:**

Sign language classes for parents of deaf or hard of hearing students are held once per month at Stoner Creek Elementary. The dates and times vary from year to year depending on student, teacher and parent schedules.

**Teacher Training:**

Several times per year the teachers at Stoner Creek attend in-service training provided by the deaf education teachers. They learn teaching techniques, communication tips, and some sign language. This helps the regular education teachers learn how to better serve the deaf and hard of hearing students who are in their classes.

**Method:**

Our program uses the Total Communication approach to language. Total Communication is the use of any means of communication: sign language, voice, fingerspelling, lipreading, amplification, writing, gesture and pictures. The philosophy of total communication is that the method should be fitted to the child, instead of the other way around.

**Classroom Communication:**

At the beginning of the year, we provide students with a folder for their deaf education work and parent communication.

On one side, it is marked "To Return". In this pocket you will find a calendar for the month and any homework or forms that need to be returned. Every day the calendar is marked with either a happy face or a sad face to let you know how your child's behavior was that day. We ask that you check the calendar and sign on that day's date so that we know you have seen it. Homework should be completed and returned to us, as should any forms that need to be signed.

On the other side, the folder is marked "To Keep". In this pocket you will find completed projects, homework and tests. This should be emptied daily.

## **Homework:**

Homework is an important factor in your child's education. Students need to learn study skills and responsibility for their education. It is also important for your child to know that **you** put his education first. As parents, we ask that you ensure that their homework (from both DE and mainstreamed classrooms) is completed and turned in on time.

As your child gets older, he/she will have increasing amounts of homework. In the regular classroom, homework usually begins in the first grade. In second grade there is typically more homework, and by third grade homework is a large part of their education.

In deaf education, homework is also essential. We teach the information and help them understand it. We support them in the regular classroom by assisting in the comprehension of terms and concepts. However, we cannot be responsible for the completion of science projects, presentations, studying for tests, memorization of math facts or spelling words, etc. This is your child's responsibility.

If your child is assigned homework in the DE classroom, it will be in their deaf education folder on the side marked "To Return". If your child is assigned homework in his/her regular classroom, it will be written in their school agenda, daily.

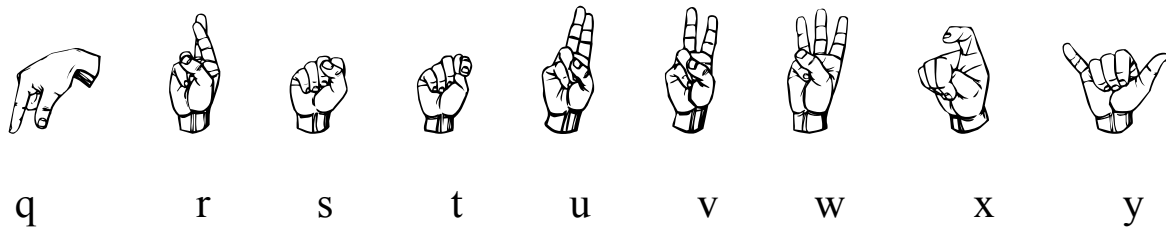
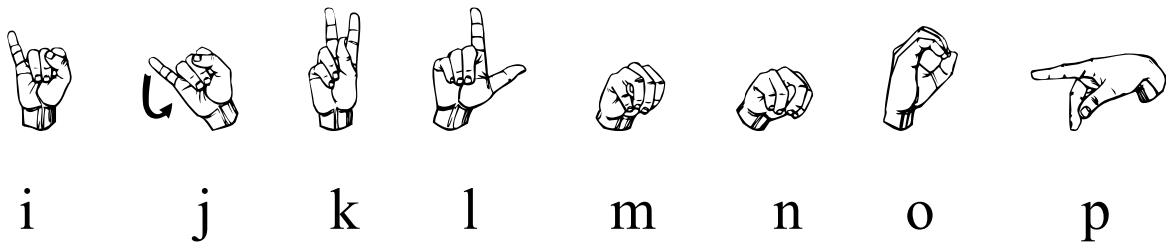
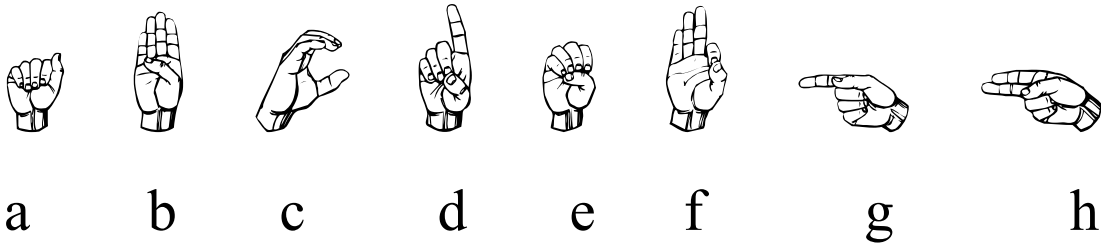
## **Tips For Helping Your Child Succeed In School:**

- Talk to your child. Use gestures, facial expressions, sign language, drawings and spoken words.
- Teach family and close friends some basic signs so they can talk to your children as well.
- Use visual language at home. Even students who will be deaf speakers rather than signers can benefit from the use of sign language at school and at home. Studies show that children who have a language—any language—do better in school than students who do not have any language until the preschool years.
- Reduce background noise. This allows the child to make use of his or her residual hearing and focus on developing spoken language skills.
- Read with your child. Use books with good pictures to keep their interest.
- Help your child with his/her homework. If their homework is important to you, then it will be more important to them. It will also help keep you informed of what they are doing at school.

**Items From Home:**

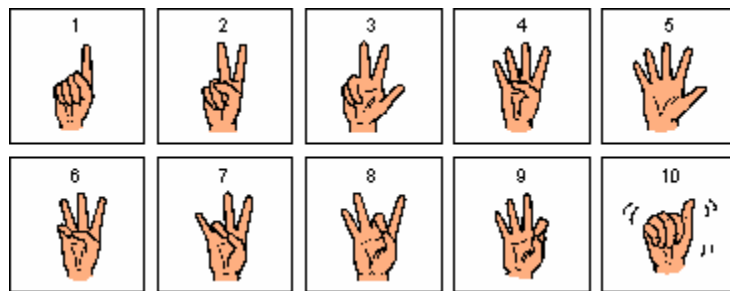
We ask that your children leave all of their toys and games at home, unless we specifically request them for an activity. Objects become a distraction to many students. Sometimes things get broken or lost. Additionally, the school bus policy states that there are to be no toys brought on the bus for safety reasons. Thank you for respecting this policy.

# Basic Sign Language Letters

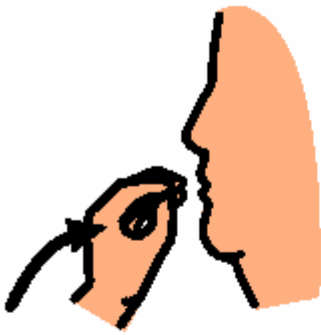


z

# Numbers



eat



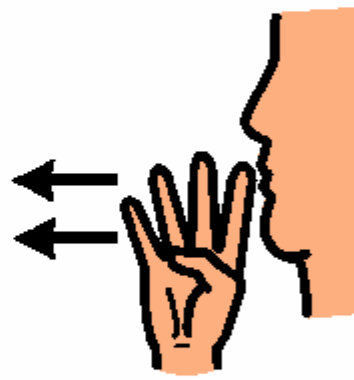
drink



sleep



talk



play



walk



I love you



hug



kiss



good



bad



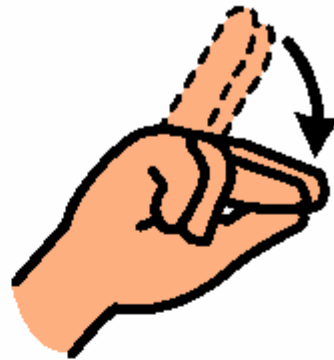
nice



yes



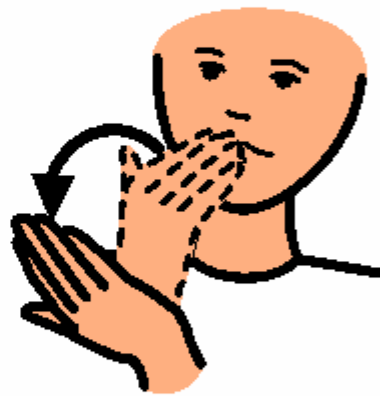
no



please



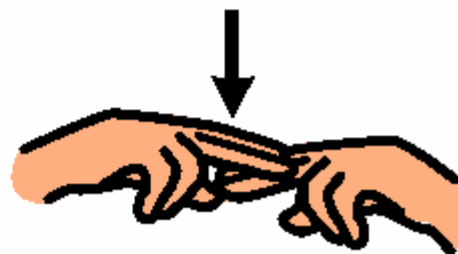
thank you



stop



sit



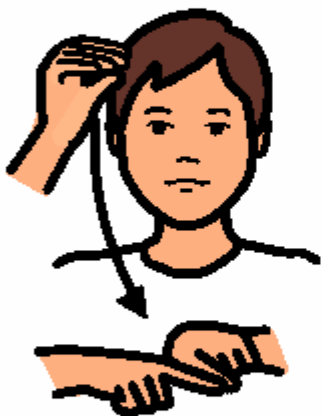
mother



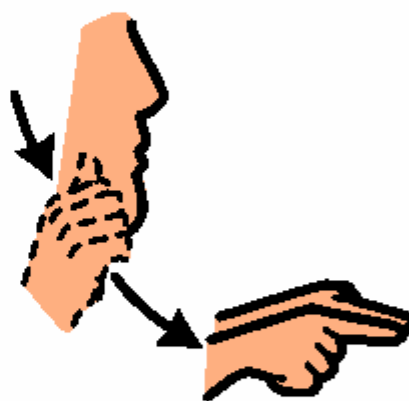
father



brother



sister



baby



home



## **Local Resources:**

### **The League for the Deaf and Hard of Hearing**

415 Fourth Avenue South

Nashville, TN 37201

Nashville

7:30 a.m.-4 p.m.

Monday-Friday

615-248-8828 (V/TTY)

615-248-4797 (fax)

<http://www.leagueforthe deaf.com>

[info@ldhh.org](mailto:info@ldhh.org)

The League for the Deaf and Hard of Hearing provides services such as interpreting, workshops, youth programs, hearing aid loan program and advocacy.

### **Library Services for the Deaf and Hard of Hearing**

615 Church Street

Nashville, TN 37219

615 862-5750 (V/TTY)

TN Toll-Free 1-800-342-3262

[library.hearingimpaired@nashville.gov](mailto:library.hearingimpaired@nashville.gov)

The library is located within the Main Branch of the Nashville Public Library. Anyone in the state of TN can borrow from their library. The library has sign language games, books, videos/DVD's as well as educational resources and parent information. They use UPS to ship to and from the library. This is a free service to anyone who desires it. Call for a membership packet.

### **Hermitage Church of Christ Deaf Ministry**

4004 Lebanon Rd.

Hermitage, TN 37076

615-883-0654

[www.hccfamily.com](http://www.hccfamily.com)

Offers beginning and advanced sign language classes as well as signed church services and Sunday school classes.

### **Brentwood Baptist Deaf Church (located inside Brentwood Baptist Church.)**

Concord Road 37027

Brentwood, TN. 7777

Contact Information

615-373-9574 (TTY)

615-324-6101 (V)

615-324-6194 (fax)

615-373-9574 Video Phone or 65.23.122.60 IP

E-Mail <http://www.brentwoodbaptist.com/>

**\*\*After School Tutoring on Mondays and Wednesday for Deaf and Hard of Hearing Youth\*\* Transportation may be available.**